

TRAFFIC CONTROL PLAN
DATE OF LAST REVISION
2018-05-17



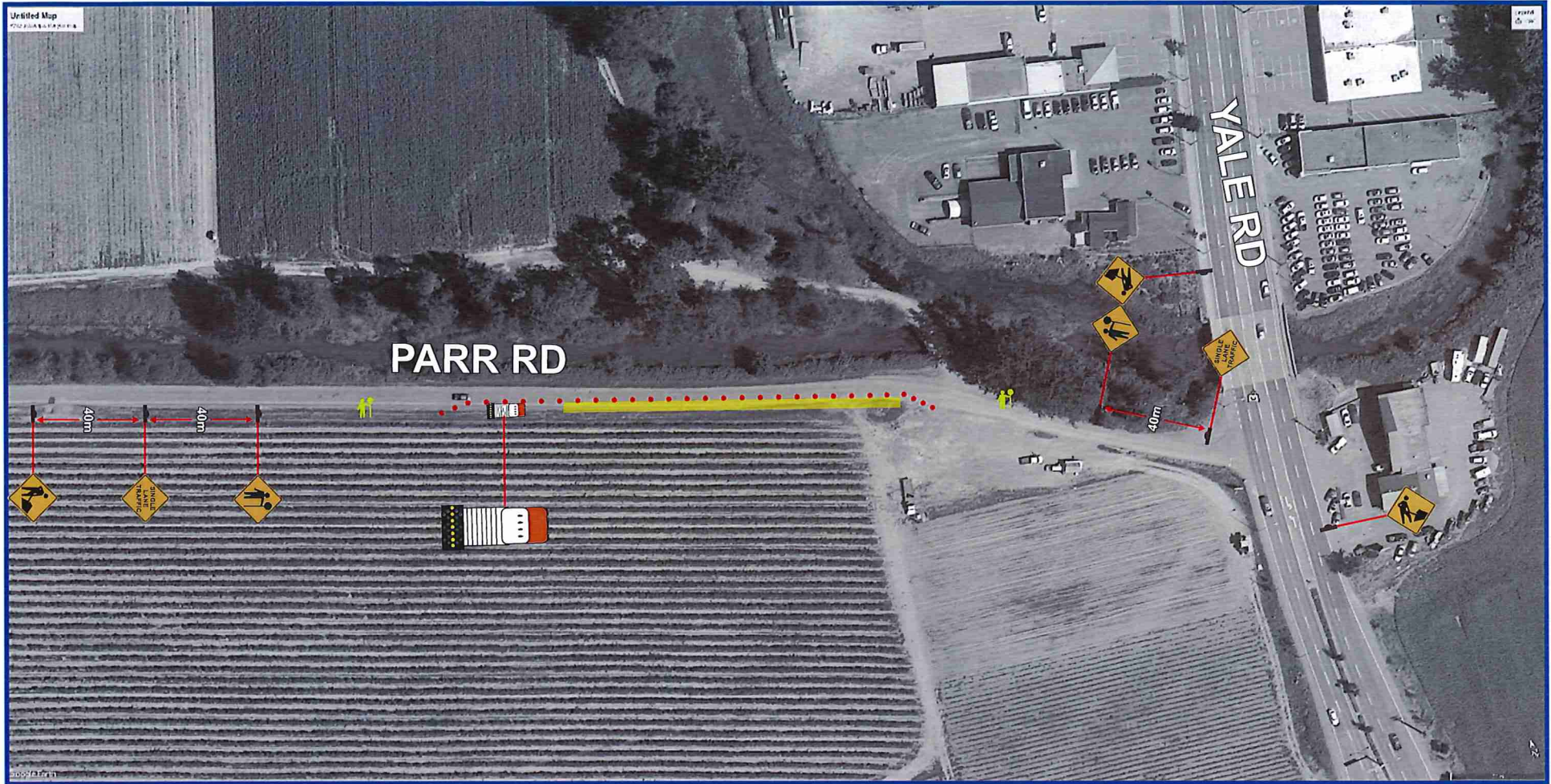
Contractor Name:	TCP #	Location:
Jakes Construction	TCP 1 of 3	Parr Rd @ Yale Rd
Job Description:		Dates:
Pipe Trenching		
Manual for Work on Roadways		Traffic Control Figure Number
2015 Interim Edition		
Contractor Contact:	Phone:	Email:
Steve Earle	604-701-3398	SEarle@jakesconstruction.ca
Traffic Plan Contact:	Phone:	Email:
Tehjay Fox	604-799-6750	tehjay@streetwisetraffic.ca

LEGEND	
	TRAFFIC CONTROL PERSONNEL
	SIGN STAND (TRIPOD)
	SIGN STAND (WINDMASTER)
	SIGN FLAGS
	WORKZONE
	ACCESS RAMP
	TRAFFIC BARREL
	TUBULAR MARKER - TYPE D
	TRAFFIC CONTROL VEHICLE
	FLASHING ARROW BOARD (FAB)
	EXISTING BUS STOP
	RELOCATED BUS STOP

GENERAL NOTES

- All traffic control shall conform to the MOTI Traffic Management Manual for Work on Roadways 2015
- Signs shown are representations only and the MOTI Catalogue of Standard Traffic Signs should be used for detailed sign design
- Dimensions shown are in meters and are the minimums except as otherwise indicated
- All permanent signage that will conflict with this site will be covered or removed while the works are in effect
- Active Work Zones and Hazards shall be delineated to protect workers and the travelling public
- Maximum distance between cones/delineator/barrel should be 10m
- Tubular markers and signs will be double based and well secured during windy conditions
- Distances may be adjusted due to urban block length
- These pages are best printed on a Tabloid (11x17) page size





TRAFFIC CONTROL PLAN

DATE OF LAST REVISION
2018-05-17



Contractor Name: Jakes Construction	TCP # TCP 2 of 3	Location: Parr Rd
Job Description: Pipe Trenching	Manual for Work on Roadways 2015 Interim Edition	Dates:
Contractor Contact: Steve Earle	Phone: 604-701-3398	Traffic Control Figure Number
Traffic Plan Contact: Tehjay Fox	Phone: 604-799-6750	Email: SEarle@jakesconstruction.ca tehjay@streetwisetraffic.ca

LEGEND

	TRAFFIC CONTROL PERSONNEL		TRAFFIC BARREL
	SIGN STAND (TRIPOD)		TUBULAR MARKER - TYPE D
	SIGN STAND (WINDMASTER)		TRAFFIC CONTROL VEHICLE
	SIGN FLAGS		FLASHING ARROW BOARD (FAB)
	WORKZONE		EXISTING BUS STOP
	ACCESS RAMP		RELOCATED BUS STOP



GENERAL NOTES

- All traffic control shall conform to the MOTI Traffic Management Manual for Work on Roadways 2015
- Signs shown are representations only and the MOTI Catalogue of Standard Traffic Signs should be used for detailed sign design
- Dimensions shown are in meters and are the minimums except as otherwise indicated
- All permanent signage that will conflict with this site will be covered or removed while the works are in effect
- Active Work Zones and Hazards shall be delineated to protect workers and the travelling public
- Maximum distance between cone/delineator/barrel should be 10m
- Tubular markers and signs will be double based and well secured during windy conditions
- Distances may be adjusted due to urban block length
- These pages are best printed on a Tabloid (11x17) page size



TRAFFIC CONTROL PLAN
 DATE OF LAST REVISION
 2018-05-17

Streetwise
 TRAFFIC CONTROLLERS INC.
 TRAFFIC PLAN

Contractor Name: Jakes Construction	TCP # TCP 3 of 3	Location: Parr Rd
Job Description: Pipe Trenching	Manual for Work on Roadways 2015 Interim Edition	Dates:
Contractor Contact: Steve Earle	Phone: 604-701-3398	Email: SEarle@jakesconstruction.ca
Traffic Plan Contact: Tehjay Fox	Phone: 604-799-6750	Email: tehj@streetwisetraffic.ca

LEGEND

TRAFFIC CONTROL PERSONNEL	TRAFFIC BARREL
SIGN STAND (TRIPOD)	TUBULAR MARKER - TYPE D
SIGN STAND (WINDMASTER)	TRAFFIC CONTROL VEHICLE
SIGN FLAGS	FLASHING ARROW BOARD (FAB)
WORKZONE	EXISTING BUS STOP
ACCESS RAMP	RELOCATED BUS STOP

GENERAL NOTES

- All traffic control shall conform to the MOTI Traffic Management Manual for Work on Roadways 2015
- Signs shown are representations only and the MOTI Catalogue of Standard Traffic Signs should be used for detailed sign design
- Dimensions shown are in meters and are the minimums except as otherwise indicated
- All permanent signage that will conflict with this site will be covered or removed while the works are in effect
- Active Work Zones and Hazards shall be delineated to protect workers and the travelling public
- Maximum distance between cones/delineator/barrel should be 10m
- Tubular markers and signs will be double based and well secured during windy conditions
- Distances may be adjusted due to urban block length
- These pages are best printed on a Tabloid (11x17) page size

